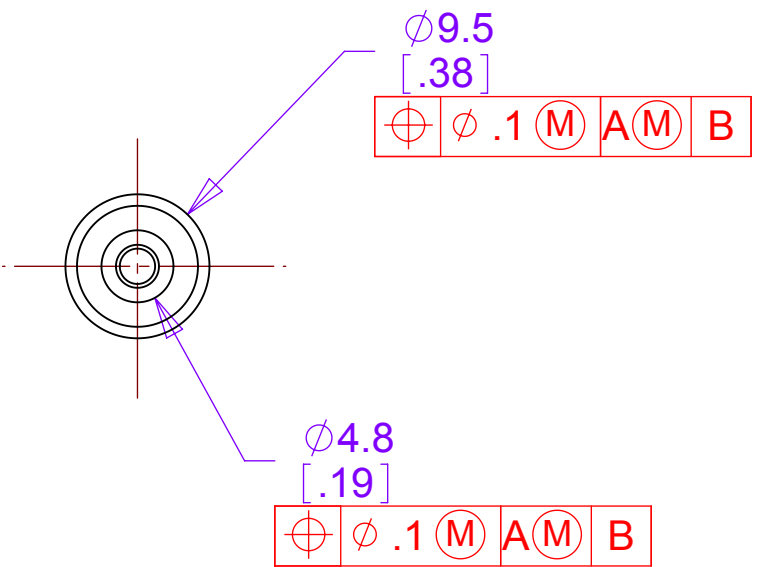
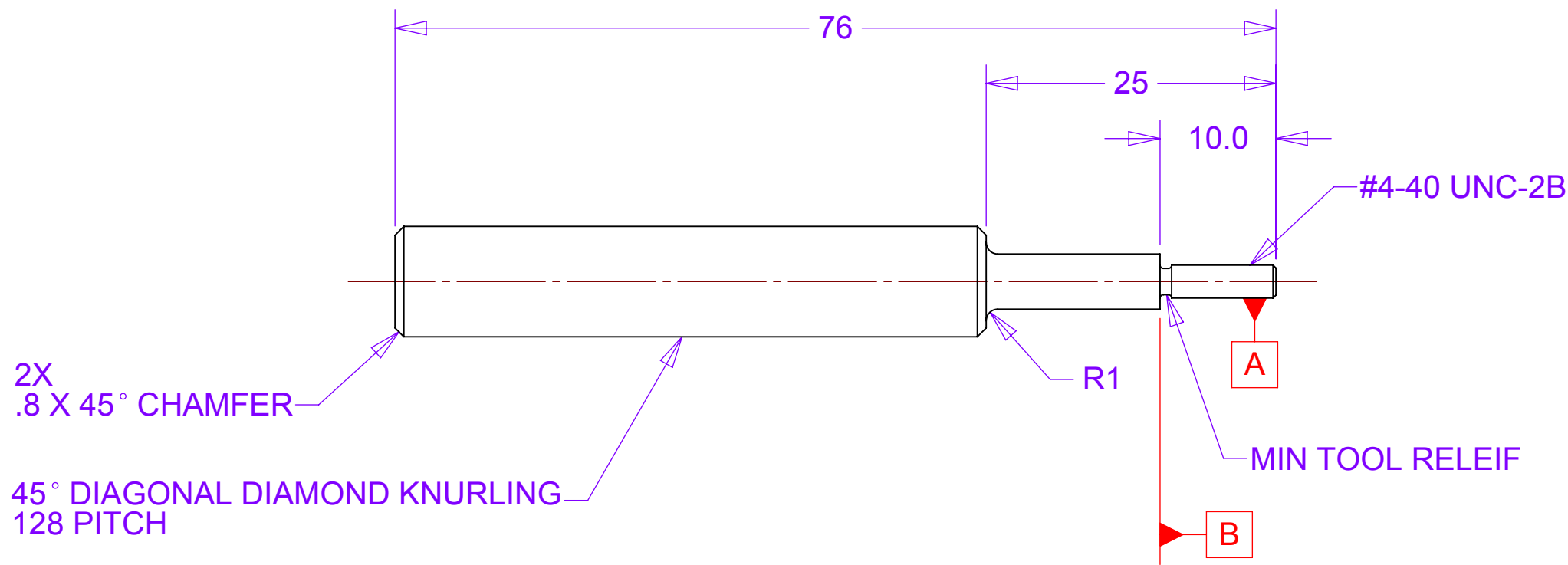
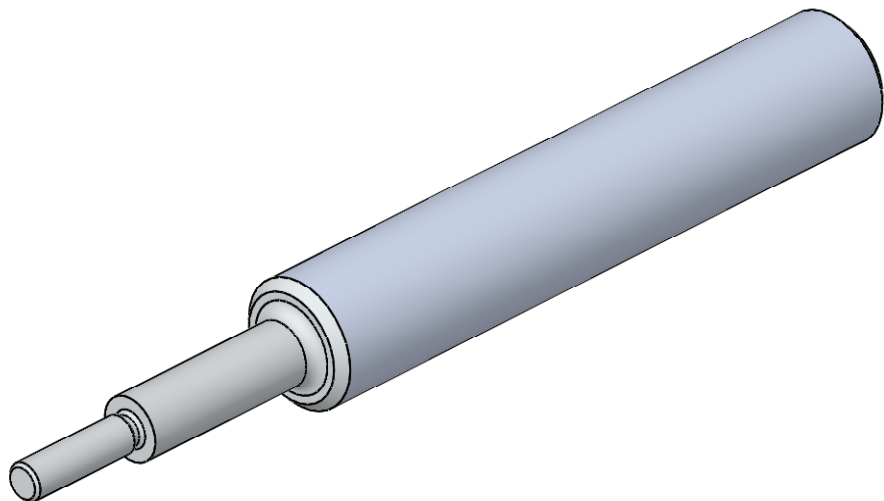


87654321

REV	REVISIONS	DATE	APPROVED
	DESCRIPTION		

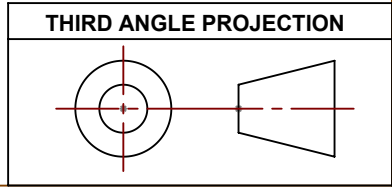


MATERIAL: 6061-T6 ALUMINUM

NOTES: UNLESS OTHER WISE SPECIFIED

- ALL DIMENSIONS IN MILLIMETERS
- DIMENSIONS AND TOLERANCING PER ASME Y14.5M-1994
- SURFACE TEXTURE PER ANSI/ASME B 46.1-1985
- REMOVE ALL BURRS
- PARTS TO BE THOROUGHLY CLEANED TO REMOVE ALL OIL, GREASE, DIRT AND CHIPS
- PART NUMBER (DRAWING NO., DASH NO., REVISION NO., SERIAL NO.) TO BE CLEARLY MARKED ON THE PACKAGING BAG OR PART ITSELF.

THIS DOCUMENT CONTAINS INFORMATION THAT IS THE PROPRIETARY PROPERTY OF HYTEC, INC. REPRODUCTION, DISCLOSURE, OR RELEASE TO OTHERS, MANUALLY OR ELECTRONICALLY, IS STRICTLY PROHIBITED WITHOUT THE PRIOR WRITTEN CONSENT OF HYTEC, INC.



UNLESS OTHERWISE SPECIFIED: DIMENSIONS ARE IN MILLIMETERS -TOLERANCES-		CAD GENERATED DRAWING, DO NOT MANUALLY UPDATE DO NOT SCALE DRAWING		<i>HYTEC, INC</i>	
DECIMALS X = +/- .5 = +/- .1 .XX = +/- .01 .XXX = +/- .001				TITLE PHENIX CENTRAL UPGRADE FV TX HALF STATION SUPPORT PANEL HANDLING POST	
ANGULAR .X = +/- .30" .XX = +/- .15"		SURFACE FINISH = 250			
FINISH			<u>SIGNATURE</u>	<u>DATE</u>	
		<u>Designer</u>	Roger L. Smith	3/8/2010	
		<u>Drawn</u>	Roger L. Smith	3/8/2010	
		<u>Checked</u>	RJ Ponchione	4/12/2010	
		<u>Engineer</u>	RJ Ponchione	3/8/2010	
		<u>Approved</u>	RJ Ponchione	4/12/2010	
PART NO. 111-PHX-02-3808-1		DWG. NO. 111-PHX-02-3808		SIZE D	SHEET NO. 1 of 1
		SCALE 2:1		REVISION	

DWG. NO. 111-PHX-02-3808 D 1 of 1

87654321